



cpas

Cerebral Palsy Alliance Singapore



PIECES THAT FIT,
**STRENGTH WE
BUILD**

Annual Report
Financial Year
2024/25

ABOUT US

Established in 1957, Cerebral Palsy Alliance Singapore (CPAS) is a social service agency that serves children and adults with cerebral palsy and multiple disabilities. Our fully integrated programmes and services cater to the developmental needs of clients and maximise their functional independence at every stage of life.



OUR VISION

Empowering persons with cerebral palsy or multiple disabilities to realise their full potential and lead fulfilled, dignified lives.



OUR MISSION

We are dedicated to:



Delivering fully integrated programmes and services at the highest standards with passion, integrity, care, and excellence.

Creating awareness of cerebral palsy or multiple disabilities and advocating equal opportunities for all persons with the condition.

OVERVIEW OF CHARITY:



Cerebral Palsy Alliance Singapore (CPAS) was registered as a society on (30/12/1960)



CPAS is a registered charity under the Charities Act (Chapter 37) since 22/08/1984
UEN: S60SS0003K



IPC status - CPAS has been accorded IPC (Institution of a Public Character) status from (01/12/2024 to 31/12/2026)

Registered Address: 65 Pasir Ris Drive 1,
Singapore 519529

Name of banker:
DBS Bank
Limited

Name of Auditor:
Deloitte &
Touche

CONTENTS

4

Chairperson's Message

5

Executive Director's
Message

6

Board Members

7

Management Team

8 - 10

Highlights Of The Year

11 - 23

Programmes

24 - 33

Allied Health

34

Events

35

The Year Ahead

36

Fundraising Plans

37 - 39

Summarised Financial
Statements





CHAIRPERSON'S MESSAGE

The Financial Year 2024/25 has been an exciting and meaningful one for CPAS. With refined programmes, strategic partnerships, and greater public engagement, we continue to evolve to meet the diverse needs of our over 800 clients with cerebral palsy or multiple disabilities. As you read through this Annual Report, I invite you to learn more about the progress we have made, and the people behind it.

This milestone year also coincides with SG60—a time for Singapore to celebrate our nation-building journey and shared values. At CPAS, it is a fitting moment to commemorate six decades of service to persons with cerebral palsy or multiple disabilities. Reflecting on this legacy is vital as it honours the courage, commitment, and community spirit that have shaped our organisation.

Our story began in 1957, when a small group of volunteers led by Professor Elaine Field started a class for ten children with cerebral palsy. Soon after, the Spastic Children's Association of Singapore was formally established at "Field House" on Gilstead Road.

In 1984, we extended our reach with the launch of the Goodwill, Rehabilitation and Occupational Workshop (GROW) at McNair Road, providing vocational training and employment to adults with disabilities. Today, GROW supports 100 clients with purpose and dignity.

In 2004, we opened our main campus—the Cerebral Palsy Centre at Pasir Ris—officiated by then Prime Minister Lee Hsien Loong. In response to growing needs, we launched EIPIC@Cove in 2011 and, in

2013, adopted our current name—Cerebral Palsy Alliance Singapore—to better reflect our inclusive mission.

In 2023, we expanded further with the opening of CPAS School (West), our second government-funded SPED school, offering customised education for students with higher support needs.

Looking ahead, we are exploring the development of a programme targeted at post-55 seniors with disabilities, with a potential launch in the coming years. We are also working towards increasing our enrolment to 1000, to ensure broader access to education, therapy, and vocational support.

As we celebrate SG60 and our own 60-year journey, we remain guided by the same values of boldness, resilience, and inclusion. On behalf of the Board, I thank our clients, families, volunteers, and partners for their unwavering support.

Let us continue forward together with purpose and compassion.

Dr Janice Wong
Chairperson,
Cerebral Palsy Alliance Singapore

A handwritten signature in black ink, appearing to read "Janice", with a long, sweeping horizontal line extending to the right.



EXECUTIVE DIRECTOR'S MESSAGE

At CPAS, we believe that the strength of an organisation lies not only in the quality of its individual parts, but in how well those parts work together. The theme of this year's Annual Report, "Pieces That Fit, Strength We Build", reflects the value we place on collaboration across departments and programmes. Like a puzzle, each programme and department contributes its unique shape and purpose. Like a puzzle, each programme and department contributes its only when fitted together with intention that we create a complete and impactful picture of support for our clients and their families.

Over the past year, we have seen how collaboration empowers our clients in meaningful ways. The Sibtopia workshop, a joint initiative by our Social Work and Psychology departments, exemplifies this. Designed to support neurotypical siblings of children with special needs from both our EIPIC and CPAS School programmes, Sibtopia created a safe space for connection, expression, and healing. Through reflective activities and heartfelt letters from parents, the workshop reminded each child that they, too, are valued members of the family. The impact was immediate—participants reported feeling more understood and expressed a desire to play a more active role in their sibling's lives.

Another example is the collaboration between our Day Activity Centre and Assistive Technology Hub to support Chan Yi Zhen, a 30-year-old client with communication difficulties. Through regular consultations, the team identified specific assistive tools—including switch-access technology and

learning apps like HelpKidzLearn—that matched Yi Zhen's abilities and learning style. With structured support, she began using custom tools like the "Top Worksheet" to complete tasks independently. Her confidence has since grown significantly—she now responds to questions with minimal prompting and recently completed an entire lesson activity independently using the app.

These stories are a testament to the strength we build when we come together with a shared purpose. As we look ahead, we remain committed to deepening these collaborations and expanding our services. In doing so, we ensure that every puzzle piece—be it education, therapy, employment support, or family engagement—continues to align and contribute to a more inclusive future for persons with cerebral palsy and multiple disabilities.

Thank you to all our staff for your dedication, professionalism, and unwavering commitment to this shared mission.

Ms. Latha Kutty
*Executive Director,
Cerebral Palsy Alliance Singapore*

A handwritten signature in black ink that reads "Latha Kutty".

BOARD MEMBERS

1 DR JANICE WONG

Chairperson

School Management Committee
(Chairperson & Supervisor)
Nomination Subcommittee (Chairperson)
Staff Subcommittee (Member)

2 MR MERVYN SIRISENA, PBM

Vice-Chairperson

Fundraising Subcommittee (Chairperson)
The Children's Charities Association of Singapore
(CCA) Representative

3 DR YOONG SIEW LEE

Honorary Secretary

Audit Subcommittee (Chairperson)
Programmes Subcommittee (Member)

4 MS YVONNE CHAN

Honorary Treasurer

Finance-Investment Subcommittee (Chairperson)
School Management Committee (Honorary Treasurer)
Nomination Subcommittee (Member)

5 MR NG WAI KEONG

Assistant Honorary Secretary

Fundraising Subcommittee (Member)
The Children's Charities Association of Singapore
(CCA) Representative

6 HJ SALLIM BIN ABDUL KADIR JP, BBM, PBM

Honorary Treasurer

Staff Subcommittee (Chairperson)
Audit Subcommittee (Member)
Finance-Investment Subcommittee (Member)

7 MR REMY CHOO

Member

Programmes Subcommittee (Member)
School Management Committee (Member)

8 MR EMILIO CHOO

Member

IT Subcommittee (Chairperson)
Staff Subcommittee (Member)
Programmes Subcommittee (Member)

9 MR ALOYSIUS WEE

Member

Fundraising Subcommittee (Member)
Audit Subcommittee (Member)

10 MR ALLAN PHUA

Member

Audit Subcommittee (Member)
Staff Subcommittee (Member)



11 DR SATYAKI SENGUPTA

Member

Programmes Subcommittee (Chairperson)
School Management Committee (Member)
Nomination Subcommittee (Member)

12 ASSOCIATE PROFESSOR KEVIN LIM, BBM, PBM, PBS

Member (Emeritus Chairman)

School Management Committee (Member)
Nomination Subcommittee (Member)

13 MR ALISTER ONG

Co-opted Member

Programmes Subcommittee (Co-opted Member)

14 MR CHONG YOON CHOU

Co-opted Member

Audit Subcommittee (Co-opted Member)
Staff Subcommittee (Co-opted Member)

15 MR CHOW SHANG WEI

Co-opted Member

Finance-Investment Subcommittee (Co-opted Member)
Fundraising Subcommittee (Co-opted Member)

16 MR LAM CHEE WENG

Co-opted Member

Finance-Investment Subcommittee (Co-opted Member)
Fundraising Subcommittee (Co-opted Member)

MANAGEMENT TEAM

EXECUTIVE DIRECTOR'S OFFICE



CORPORATE SERVICES



PROGRAMMES



ALLIED HEALTH PROFESSIONALS (AHPs)



1 MS LATHA KUTTY
Executive Director

2 MS CATHERINE WEE
Head of Department, Advocacy & Marketing

3 MS NICKIE ANG
Head of Department, Finance

4 MS FOO MUI LENG
Head of Department, Human Resources,
Learning, Development and Consultancy,
Corporate Strategy Development

5 MS LEEMA FRANKLIN
Head of Department, Information Technology

6 MS AZALEA ONG
Principal, Early Intervention Programme
for Infants and Children

7 MRS KOH-LIM AI LAY
Principal, CPAS School (West)

8 MR BOO HIAN KOK
Principal, CPAS School (East)

9 MR TNG TIAN HENG TOMMY
Head of Department, Goodwill, Rehabilitation
and Occupational Workshop

10 MS ROZILA BINTE MAHMUD
Head of Department, Day Activity Centre

11 MS MANJU MOHTA
Senior Principal Occupational Therapist,
Head of Department, Assistive Technology Hub

12 MS PAMPI GHOSH
Senior Principal Therapist, Head of Department,
Occupational Therapy

13 MR D. SENTHIL KUMAR
Senior Principal Therapist, Head of Department,
Physiotherapy

14 MS CORDILIA JUSTIN
Senior Principal Psychologist,
Head of Department, Psychology

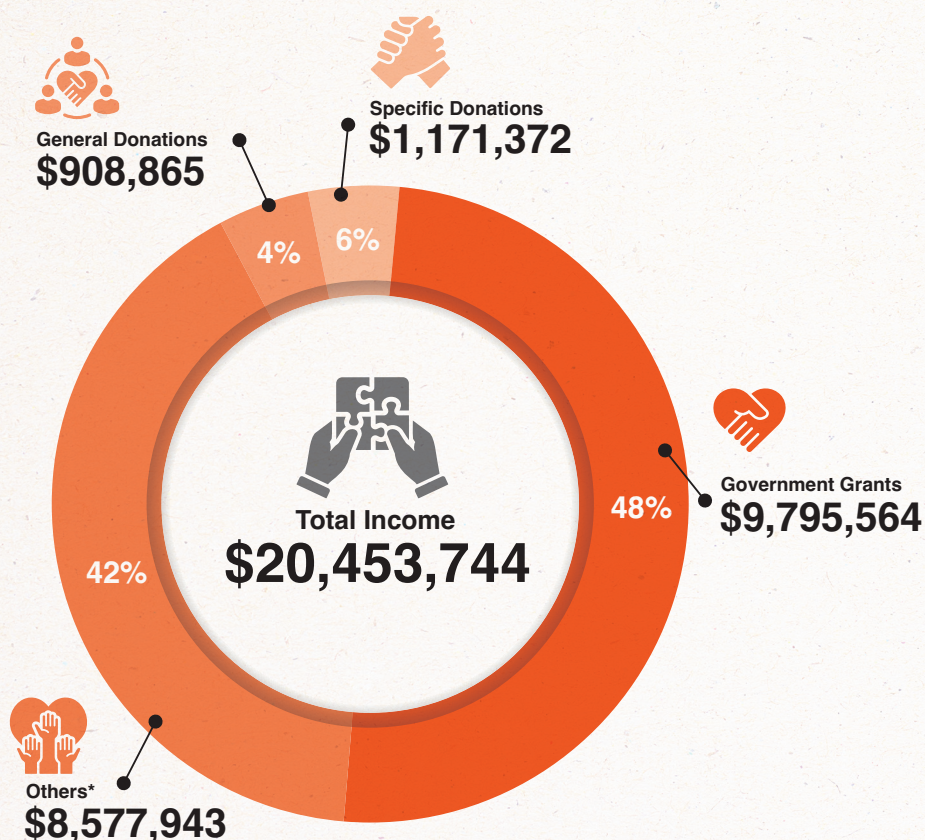
15 MS SHELLY LOH
Senior Principal Social Worker,
Head of Department, Social Work

16 MS SUNITHA SENDHILNATHAN
Senior Principal Therapist, Head of Department,
Speech & Language Pathology

HIGHLIGHTS OF THE YEAR

SUMMARY FINANCIAL PERFORMANCE

INCOME

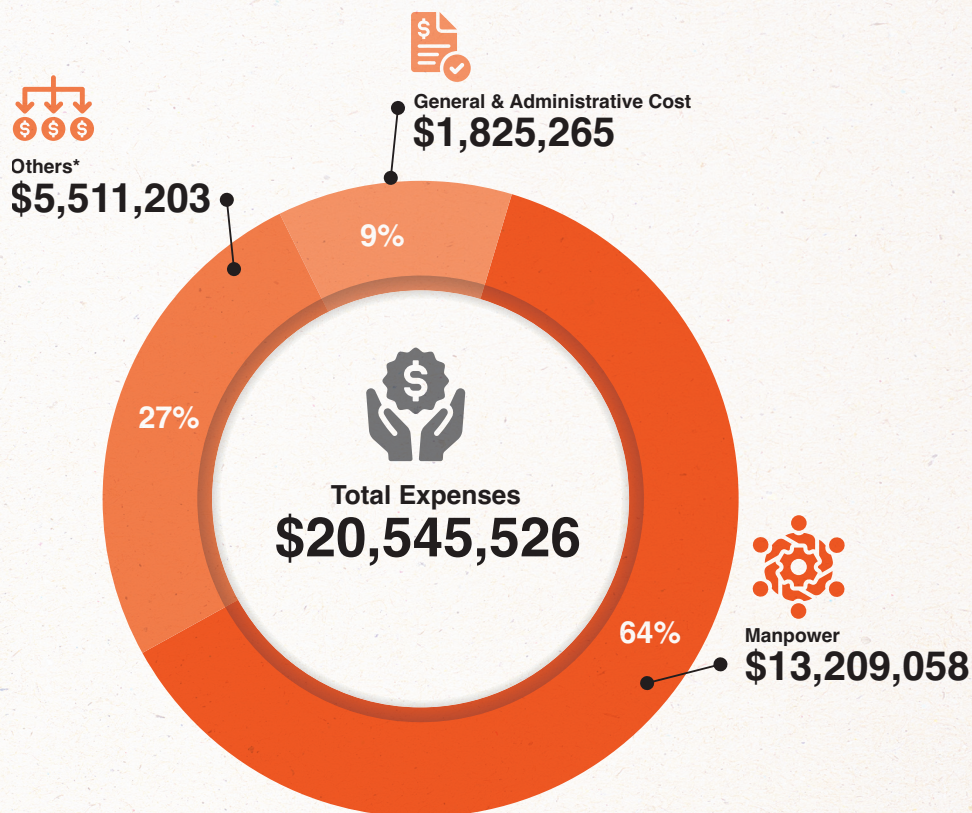


*Others includes Programme/Therapy Fees, TOL Fee, Wage Credit Scheme, and Others.

HIGHLIGHTS OF THE YEAR

SUMMARY FINANCIAL PERFORMANCE

EXPENSES



*Others includes GST Expense, Interest Expense & Depreciation (ROU Asset), Utilisation of specific fund, Upkeep and utilities, and Others.

HIGHLIGHTS OF THE YEAR

STATISTICS SNAPSHOT

OVER
800 CLIENTS

376 STAFF

AVERAGE OF
66
HOURS OF TRAINING
PER STAFF

249 EIPIC
STUDENTS
88 STUDENTS GRADUATED FROM
EIPIC IN END 2024

286 CPAS SCHOOL (EAST) STUDENTS
17 STUDENTS GRADUATED FROM CPASS IN END 2024
6 CLASSES IN ACADEMIC PROGRAMME
14 CLASSES IN FUNCTIONAL PROGRAMME
26 CLASSES IN HIGH SUPPORT PROGRAMME

72 CPAS SCHOOL
(WEST) STUDENTS
5 CLASSES IN FUNCTIONAL
PROGRAMME
7 CLASSES IN HIGH
SUPPORT PROGRAMME

58 CLIENTS
IN DAC

41 CPAS CONNECT ALUMNI
PROGRAMME MEMBERS

23,993
HOURS OF
PHYSIOTHERAPY

100 TRAINEES
IN GROW

29,045
HOURS OF
OCCUPATIONAL THERAPY

147 SCREENINGS AND ASSESSMENTS
CONDUCTED BY PSYCHOLOGY

31,964
HOURS OF SPEECH
& LANGUAGE
THERAPY

199 SCREENINGS CONDUCTED BY
SOCIAL WORK



PROGRAMMES

PROGRAMMES

EARLY INTERVENTION PROGRAMME FOR INFANTS AND CHILDREN (EIPIC)

Programme Overview

The Early Intervention Programme for Infants and Children (EIPIC) supports children under six years old who require medium to high levels of early intervention (EI) support.

The programme aims to increase each child's developmental growth potential in several key areas. These include fostering positive social-emotional relationships, supporting the acquisition and use of knowledge, and encouraging appropriate behaviours

to help children meet their needs. It also works to minimise the development of secondary disabilities and maximise opportunities for integration into mainstream settings.

CPAS offers a range of EIPIC services tailored to different needs. These include EIPIC@Centre, EIPIC Under2s, the High-Needs Grant, home-based intervention, and DS-Plus.

Statistics:

Total Enrolment as of **31 March 2025: 249**

Breakdown by percentage of diagnostic profile of Clients as of **31 March 2025:**

Autism/Suspected Autism	47%
Global Developmental Delay	40%
Speech & Language Delay	8%

Other disabilities	3%
Down Syndrome	1%
Cerebral Palsy and multiple disabilities	1%

Client Spotlight: Charlotte

Charlotte is a cheerful and lively young girl who brings joy to everyone around her. A delight to work with, she has shown remarkable growth in both her social and physical development over the past year.

Charlotte enjoys interacting with her peers and has made significant progress in initiating these interactions more confidently. She has also shown improvement in expressing her emotions, effectively using communication charts and simple 2 to 3-word phrases to share her feelings and needs.

Physically, Charlotte has demonstrated increased strength and endurance, especially in walking. With the support of her assistive walking equipment, she can take independent steps more steadily.

Her resilience and positive spirit continue to inspire those around her, making her a shining example of progress and perseverance.





Programme Highlights

1. Showcasing Progress at the Early Intervention Conference 2024

As part of our commitment to professional development and knowledge sharing, the EIPIC team participated in the Early Intervention Conference in April 2024. Our educators proudly presented innovative assistive teaching devices through an engaging booth display, showcasing practical tools designed to support the learning and development of children with special needs. The presentation drew interest from fellow professionals in the field and was honoured by a visit from Minister Masagos Zulkifli, highlighting the importance of inclusive practices and the role of innovation in early intervention.

2. Celebrating Children at EIPIC Children's Day 2024

To celebrate Children's Day this year, the Early Intervention Programme for Infants and Children (EIPIC) organised a vibrant and inclusive carnival designed to bring joy to our students and their families. Held at Pasir Ris Elias Community Club—chosen for its accessibility and history of collaboration with CPAS—the event offered a safe and engaging environment tailored to meet the unique needs of our children.

The carnival featured an exciting lineup of activities including bouncy castles, a ball pit, drip painting, balloon sculpting, glitter tattoos, and a balloon dome. Caregivers were warmly invited to join in the fun, creating an atmosphere of community celebration. The strong turnout during both morning and afternoon sessions reflected the event's success, with many parents expressing appreciation for the opportunity to share a joyful and meaningful experience with their children.

CPAS SCHOOL (EAST)

Programme Overview

CPAS School (East) is a double-session Special Education (SPED) school serving students with moderate to severe multiple disabilities aged between 7 and 18 years old. We offer the SPED Curriculum as recommended by the Ministry of Education. To realise its vision, the school focuses on equipping students with the ability to manage daily living activities, communicate effectively, and travel independently, in line with individual abilities. These areas are integrated across three programmes: the Academic Programme (Acad), Functional Programme (FP), and High Support Programme (HSP).

Statistics:

Total Enrolment as of 31 March 2025: 286

Breakdown by percentage of diagnostic profile of Clients as of 31 March 2025:

Other disabilities	40%
Cerebral Palsy with other disabilities	39%

Other disabilities	19%
Duchenne Muscular Dystrophy	2%

Client Feature: Wee Zhi Qing Bravienne

Wee Zhi Qing Bravienne, a student with Cerebral Palsy and Global Developmental Delay, exemplifies leadership, resilience, and creativity. As Head Prefect, she confidently leads school tours and contributes to video editing and graphic design. Through perseverance and support from her teachers and the Trans-Disciplinary team, she has become proficient in using the iPad. Her skills were showcased during Apple CEO Tim Cook's visit and in a live CNA938 interview. An active Scout, Bravienne demonstrated independence on a school trip to Melbourne and received Leadership Awards in 2023 and 2024. She was nominated for the 2025 Lee Kuan Yew Exemplary Student Award.



Programme Highlights

1. Breaking Barriers: Visit by Apple CEO Tim Cook

On 18 April 2024, CPAS School (East) had the honour of hosting Apple CEO Tim Cook. The visit provided an opportunity to showcase how Apple technology is meaningfully integrated into teaching and learning to support students with diverse needs. During the visit, student Darren demonstrated how he uses an iPad with custom joysticks and switches to design digital stickers using the Keynote app. Student Aloysius engaged Tim using an iPhone equipped with the Live Speech feature and the Proloquo2Go app, sharing his hobbies and creative projects.

This visit affirmed the efforts of CPAS educators in incorporating assistive technology to foster accessibility, engagement, and independence in learning. CPAS remains committed to leveraging technology to empower students to communicate, learn, and participate meaningfully in their communities.

2. Accessible Adventures: High Support Holiday Programme

On 5 June 2024, the High Support Programme collaborated with Republic Polytechnic's Sensory Circus (Diploma in Arts and Theatre Management) to deliver a multi-sensory experience at The Republic Cultural Centre. Highlights included Oddysea: Journey into the Deep Blue, a music performance by the RP Band, and a Music and Movement activity by CPASS. The event offered meaningful holiday engagement and was later showcased at the Arts and Disability Forum on 25 March 2025 at Esplanade – Theatres on the Bay, with an audience of 300.

3. Outdoor Education Programme: Melbourne Adventure Trip

From 2022 to 2024, CPAS School partnered with Republic Polytechnic's School of Sports, Health and Leisure to implement a three-year outdoor experiential learning programme designed to build students' confidence and self-esteem. Guided by a "challenge by choice" approach, students engaged in progressively demanding activities at their own pace, supported by Republic Polytechnic staff and student volunteers.

The programme culminated in a six-day overseas trip in September 2024 to YMCA Camp Manyung in Melbourne, Australia, involving 24 students from CPAS School (East) and CPAS School (West). Located on the scenic Mornington Peninsula, the inclusive campsite offered accessible facilities and a wide range of outdoor activities including the flying fox, tree rolling, giant swing, and a campfire session. While some activities were physically and emotionally challenging, students showed remarkable courage, supported one another, and embraced new experiences beyond their comfort zones.

This trip was made possible through the generous sponsorship of Singapore Airlines under the 2023 SIA Cares fundraising initiative. In addition to supporting the trip, the remaining funds from the initiative will go towards enhancing special education programmes through the purchase of assistive technology and equipment.



3

CPAS SCHOOL (WEST)

Programme Overview

CPAS School (West) serves students aged 7 to 18 years with moderate to severe multiple disabilities. Students are placed in either the Functional Programme (FP) or High Support Programme (HSP) based on their individual needs.

The Functional Programme caters to students requiring moderate support in daily living and learning. Senior students develop pre-vocational skills, and those assessed to have potential for open or sheltered employment are trained at the school's social enterprise, MiniMart@CPAS. The High Support Programme supports students with higher needs in mobility, fine motor skills, self-help, and learning. The curriculum focuses on promoting well-being through a holistic approach.

Client Feature: Avery Chua Han Yu

Avery, from Class 4C, began her journey with significant challenges in communication, mobility, and self-care. Through the use of her Augmentative and Alternative Communication (AAC) device, she gained confidence in real-life settings, including national events. Teachers introduced cycling and frame running to support her motor development, while self-feeding skills were strengthened through gradual withdrawal of assistance. Adapted learning materials and home-school collaboration further supported her academic growth. A milestone was reached when Avery led the school in pledge-taking using her AAC device. Today, she demonstrates improved communication, physical coordination, and independence.



Statistics:

Total Enrolment as of **31 March 2025: 72**

Breakdown by percentage of diagnostic profile of Clients as of **31 March 2025:**

Cerebral Palsy with other disabilities	44%
GDD with other disabilities	31%
Other disabilities	25%





Programme Highlights

1. From Skills to Self-Discovery: The Power of EnrichME!

Launched in 2024, the EnrichME! after-school enrichment programme was designed to provide senior students with meaningful opportunities to explore their interests and acquire essential life skills. Activities offered include visual arts, baking, gardening, community mobility (Let's Go Jalan Jalan!), financial literacy, cooking, and IT enrichment. These termly modules aim to promote autonomy, creativity, and social interaction outside the academic curriculum. Notable outcomes include the creation of a student-designed sensory garden and the development of digital resources for school use, showcasing students' practical contributions.

Through EnrichME!, students gained hands-on experience, enhanced their communication skills, and developed a sense of ownership over their learning. The programme reflects CPAS School (West)'s commitment to providing a holistic and inclusive educational experience that prepares students for greater independence and community participation.

2. Racing Towards Independence: Frame Running Programme

Frame Running, a para sport for individuals with mobility challenges, empowers students to build physical strength and confidence through competitive athletics. In 2024, students from the Frame Running CCA achieved commendable results at the National Para Athletics Championships and the Haw Par National Youth Para Athletics Meet, earning multiple top three finishes. These achievements are a testament to their dedication, resilience, and sporting excellence.

Beyond competition, Frame Running promotes physical fitness and encourages students to set and pursue personal goals. To build capacity, two staff members—Mr Tan Choon Kiang (Job Coach) and Ms Ni Ni Swe (Senior Physiotherapist)—attended an international Frame Running Coaching Course in Copenhagen, Denmark, from 7 to 14 July 2024. Their participation, supported by the Singapore Disability Sports Council, has strengthened the school's ability to deliver specialised sports programmes that promote empowerment, inclusion, and lifelong physical activity.

3. Gaming for Good: Success at the ECO-Game Design Challenge 2024

Three students from the IT Enrichment Programme took part in the National Environment Agency's ECO-Game Design Challenge, held from September to October 2024. Their submission, "Urgent Business", won 1st Prize in the Special Education School category, outperforming entries from five other schools. The game, a creative adaptation of Snakes and Ladders, was designed to promote public toilet hygiene by incorporating visual humour and educational elements. This achievement highlighted the students' ability to apply creative thinking and teamwork to address real-world social issues. Through the design process, students improved their digital literacy, communication, and problem-solving skills. Their success also exemplifies how inclusive education and enrichment programmes can nurture innovation and advocacy in students with disabilities.

GOODWILL, REHABILITATION AND OCCUPATIONAL WORKSHOP (GROW)

Programme Overview

The GROW sheltered workshop provides vocational training and a range of work experiences for adults aged 18 years old and above with cerebral palsy and multiple disabilities, many of whom experience motor skill challenges. The programme features four primary product and service areas designed to enhance employability and independence.

Project Works offers subcontracted manual tasks such as folding die-cut boxes, labelling, packaging, and component assembly. These tasks allow trainees to develop fine motor skills through hands-on practice. Although such subcontract opportunities have become more limited in recent years, efforts to secure new projects continue. Trainees also participate in eco-friendly initiatives, including shredding and pulping paper to create upcycled notebooks.

For those who are IT-literate and cognitively able, GROW's IT-Hub trains trainees in digital design and office-related tasks. Using professional software, they produce greeting cards, name cards, and printed materials, while also gaining experience in document scanning and data entry. With a fully equipped digital printing facility and status as a GeBIZ Partner, GROW serves numerous government and educational institutions.

Trainees with artistic abilities receive training in traditional acrylic and watercolour painting. Their artworks are highly sought after and are reproduced on corporate gifts and greeting cards. In addition, GROW operates a cafeteria, gift shop, and pushcarts to provide trainees with practical retail experience, including customer service and financial literacy.

Statistics:

Total Enrolment as of **31 March 2025: 100 clients**

Breakdown by percentage of diagnostic profile of Clients as of **31 March 2025:**

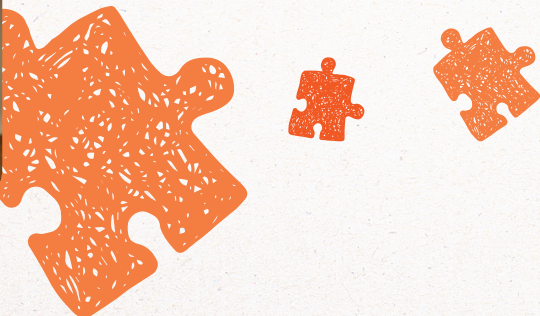
Cerebral Palsy	78%
Other disabilities	10%
Autism Spectrum Disorder	7%

Global Developmental Delay	3%
Down Syndrome	2%



Client Feature: Dang Yun Ying

Since joining GROW in 2023, Dang Yun Ying has made significant progress. Initially reserved and communicating only in Mandarin, she quickly adapted to packing tasks despite her mobility limitations. During cross-training, her artistic talent emerged, and her artwork was later exhibited at multiple events. In mid-2024, she joined the GROW IT-Hub, where she excelled in designing festive greeting cards using Canva. These designs were featured in the CPAS e-shop. Her commitment, creativity, and drive have inspired her peers and reflected the transformative potential of the GROW programme.





Programme Highlights

1. Art Meets Retail: Collaboration with Link's Malls Link REIT Collaboration

In partnership with Link's Malls, GROW artist Ang Wei Lun created a festive artwork that was printed on tote bags for the "Enchanted Forest" Christmas event at malls such as Jurong Point, Swing By @ Thomson Plaza, and AMK Hub. This initiative not only celebrated inclusive art but also offered shoppers an opportunity to support persons with cerebral palsy or multiple disabilities through CPAS.

2. Celebrating Heritage Through Art: Amity Global Institute Mural

GROW artist Mdm Minah Binti Mohd, guided by art instructor Mr Patrick Yee, painted a Singapore-themed mural for Amity Global Institute. Installed on the AGI campus wall, the mural reflects the artist's resilience and creative expression while spotlighting Singapore's cultural vibrancy. The collaboration demonstrates the power of art in highlighting the abilities of people with cerebral palsy or multiple disabilities.

3. Showcasing Ability: Shaping Hearts 2024

GROW participated in Shaping Hearts 2024, Singapore's largest inclusive arts festival, organised by North East CDC. Five artworks by GROW trainees were exhibited at Sengkang Grand Mall and Promenade MRT station, celebrating the creativity and talent of artists with disabilities on a national platform.

4. Public Engagement Through Booth Sales

GROW was invited to participate in various booth sale events throughout the year, including MINDEF's Mid-Autumn Festival and SG Enable's I'm Collective Gift Market. These events provided valuable platforms for trainees to engage with the public, enhance their communication skills, and experience real-life retail interactions. Members of the public showed strong support for the handcrafted merchandise produced by our trainees, fostering both awareness and appreciation for their abilities.

DAY ACTIVITY CENTRE (DAC)

Programme Overview

The Day Activity Centre (DAC) provides day care services for adults with cerebral palsy or multiple disabilities, aged 18 to 55 years, who require higher levels of support. Established in February 2006, DAC offers a balanced and structured curriculum that promotes self-help skills, social inclusion, and rehabilitation. Clients engage in a wide range of activities such as training in Activities of Daily Living (ADL), community living, and social and interpersonal skills. They also participate in language and cognitive activities, music and movement, as well as receive therapy services including occupational therapy, physiotherapy, and speech therapy. The programme aims to empower clients to lead more meaningful lives while offering caregivers essential respite and peace of mind.



Client Feature: Jia Jie

Jia Jie, a 25-year-old client from Daisy Class, has made notable progress in self-help and mobility skills. Initially unmotivated and requiring frequent prompting, she now independently wheels herself throughout the Centre and assists with classroom routines. With the consistent support of her Training Officers and Aides, Jia Jie has also learned to transfer herself from her wheelchair during toileting and helps open doors for her peers. Her transformation from a dependent to a confident and helpful classmate is a testament to her determination and the staff's encouragement. Jia Jie now takes pride in assisting teachers, such as cleaning up after activities—demonstrating the empowerment that comes with skill development and self-belief.

Statistics:

Total Enrolment as of **31 March 2025: 58 clients**

Breakdown by percentage of diagnostic profile of Clients as of **31 March 2025:**

Cerebral Palsy	81%
Global Developmental Delay	10%
Other disabilities	9%



Programme Highlights

1. Story Massage for High Support Needs

In 2024, the Story Massage Programme was introduced in Sunflower Class, enhancing engagement among clients with high support needs. This activity combines positive touch with storytelling, rhymes, or songs, aiming to improve communication, social interaction, and self-confidence. Clients responded through gestures and expressions, showing increased emotional engagement. Staff capability also improved, as Training Officer Aides gained the skills and confidence to facilitate Story Massage independently following training and classroom attachments.

2. DAC Community Engagement & Activities

Throughout the year, DAC organised diverse community activities that enriched our clients' experiences and strengthened community partnerships. In August, Singapore Land Pte Ltd sponsored an exceptional outing for 50 clients to Gardens by the Bay, where dedicated volunteers assisted with accessibility needs while exploring the Flower Dome and Cloud Forest.

Our annual DAC Fun Fair in October brought together staff and clients for games, food, and arts & crafts, successfully raising \$3,178.80 for DAC Project Engage funds. December marked a

valuable healthcare initiative as 43 clients received eye screenings from Ngee Ann Polytechnic's Year 3 Optometry students, fostering educational partnerships while addressing client wellness needs.

The Orchid class concluded the year with an engaging urban farm tour at Park Royal Hotel in March, where clients participated in hands-on vegetable tempura making and enjoyed hospitality from hotel staff. These activities demonstrate DAC's commitment to providing meaningful community experiences that promote social inclusion, health awareness, and life skills development for our clients.



CPAS CONNECT ALUMNI

Programme Overview

Established in October 2016, the CPAS Connect Alumni Programme aims to engage students and clients who have graduated from CPAS School or left the programmes under Adult Services. Through the provision of holistic services including activities, ad-hoc events and mentoring for employment, CPAS Connect provides opportunities for members to further develop their talents and skills.

Client Spotlight: Jeralyn Tan

Jeralyn Tan is a proud Cerebral Palsy Alliance Singapore (CPAS) Alumni Programme member. She actively participated in digital art initiatives and regularly joined the outings organised by the programme. Through sheer hard work and determination, she recently achieved a significant milestone by representing Singapore at the Paris Paralympic Games. She was awarded a Silver medal in women's individual BC1 event, the first Boccia Paralympic medalist for Singapore. Her achievement showcased her dedication, talent, and spirit internationally.

Jeralyn picked up the sport as a co-curricular activity in 2008, when she was a student in CPAS. She received guidance from her alumni teacher and support from her coach and Allied Health Professionals; including assistance from the seating clinic provided by a CPAS Occupational Therapist.

Jeralyn has also conducted talks and shared at schools and organisations, fostering greater understanding and support for people with disabilities. She inspired the community by sharing her journey as a Boccia Medallist, breaking barriers for persons with disabilities, and championing inclusion through her leadership, advocacy, and outreach within the PWD community and the mainstream. Her dedication to advocacy and empowerment made her a true leader and role model within and beyond the CPAS community.

Statistics:

Total Enrolment as of **31 March 2025: 45 clients**

Breakdown by percentage of diagnostics profile of Clients as of **31 March 2025:**

Cerebral Palsy	96%
Global Developmental Delay	3%
Others	1%

Programme Highlights

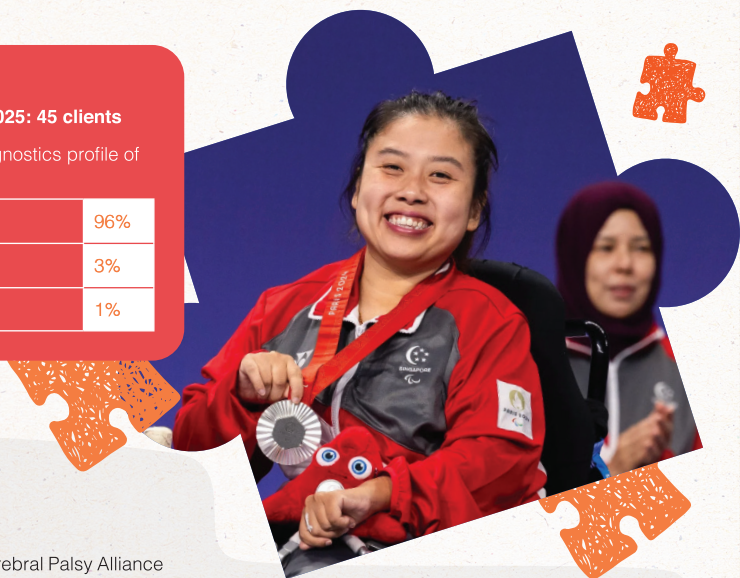
Collaboration with SMU

The collaboration between the Cerebral Palsy Alliance Singapore (CPAS) Connect Alumni Programme and first-year students from Singapore Management University (SMU) has fostered meaningful interactions through a blend of virtual, physical, and outing-based activities.

SMU organised virtual sessions that "walk" CPAS alumni through interactive experiences, daily living, music, sensory engagement, social stories and life experiences conducted fortnightly for 5 months.

Physical sessions were conducted in CPAS every Tuesday covering Life Experiences, Hands-on Activities, Art & Crafts, Gardening, Interactive Games and topics on empowerment

This hybrid programme featured both virtual sessions and physical weekly engagements, culminating in a heartwarming closing campfire at CPAS.



CPAS THERAPY REHABILITATION PROGRAMME

Programme Overview

The Home Management Programme (HMP) specialises in providing comprehensive therapy and intervention services to individuals with cerebral palsy and associated disabilities, for better social and community engagement. Utilising an interdisciplinary approach, our registered therapists offer a variety of therapies, including physiotherapy, occupational therapy, and speech-language therapy directly at the client's residence for maximised convenience and efficacy.

The Outpatient Programme at CPAS offers specialised therapy and intervention services to clients diagnosed with cerebral palsy and other physical disabilities for better social and community participation. This programme is designed for clients who can commute to our centre, either independently or through caregiver assistance.

Statistics:

Total Enrolment as of **31 March 2025: 63 clients**

Breakdown by percentage of diagnostic profile of Clients as of **31 March 2025:**

Cerebral Palsy	71%
Autism Spectrum Disorder	8%
Associated Syndrome	6%
Global Development Delay	6%

Speech Delay	3%
Dyslexia	2%
Spina Bifida	2%
Muscular Dystrophy	2%

Client Spotlight: Suhana

At 48, Suhana Binte Suhaimi's journey exemplifies how dedicated rehabilitation support transforms lives. Living with cerebral palsy and dystonia, she has flourished through CPAS' comprehensive outpatient services over the past five years.

After a 2015 fall ended her administrative career and caused persistent back pain, Suhana joined CPAS in 2019, receiving weekly physiotherapy and occupational therapy sessions through the CPAS Therapy Rehabilitation Programme. The physiotherapy programme focuses on preserving her range of motion, preventing contractures, and improving balance through targeted upper limb exercises. Her therapists prescribed a lumbar brace and home exercise regimen to manage chronic back pain effectively.

Simultaneously, CPAS' occupational therapy programme addresses three crucial areas: enhancing motor function through strength and coordination exercises, building self-help skills for daily independence, and providing assistive technology evaluations for adaptive devices including motorised wheelchairs.

This comprehensive support has prevented physical deterioration while maintaining Suhana's mobility and independence. Empowered by this stability, she has pursued remarkable achievements: earning a 2021 Modelling Award from Singapore Fashion Runway, receiving a 10-Year Long Service Award for community volunteering, and growing her home-based baking business, Pelangi Delights, which secured a Maybank grant in 2025.

Suhana's story demonstrates CPAS' holistic approach to rehabilitation, enabling individuals to not just maintain function, but thrive and contribute meaningfully to society.





ALLIED HEALTH

OUR ALLIED HEALTH PROFESSIONALS

Our Allied Health Professionals extend a comprehensive range of specialised healthcare and support to our clients.



ASSISTIVE TECHNOLOGY HUB

Department Overview

Assistive Technology (AT) refers to any item, equipment, or system that enhances the functional capabilities of individuals with disabilities in daily living, learning, and work. The CPAS Assistive Technology Hub supports clients by providing personalised AT solutions, training staff and caregivers to integrate these tools into daily routines and creating inclusive environments through home and centre modifications.

Client Feature: 'C'

For clients like DAC Client 'C', who has spastic quadriplegia and no functional hand movement, independent mobility once seemed unattainable. Through the integration of advanced AT—such as R-Net powered wheelchairs, Omni Control systems, and input devices like head arrays and sip-and-puff systems—C is now empowered to drive independently. These technologies interpret subtle head movements or breath inputs to control movement, offering safety, precision, and freedom of mobility.



Statistics:

- Total of 25 Training sessions were conducted to upskill Teachers/Interventionists/Training Officers.
- More than 85% of clients (54 out of 63) scored a positive outcome of function achievement and satisfaction, measured on the Adapted Canadian Occupational Performance Measure.

Department Highlights:

The Innovation Wing at AT HUB is a dynamic initiative fostering creativity and problem-solving through internal expertise and external collaboration. Its mission focuses on developing innovative solutions for clients' unique challenges through ideation, prototyping, and implementation of user-centered innovations.

The Innovation Wing successfully delivered numerous solutions enhancing classroom participation and independent learning, including 3D printed jelly bean switch mounts, automated flag machines, and lift accessible buttons.

Notably, we collaborated with ST Engineering to create Rain Shield, a customised hands-free device protecting powered mobility users from heavy rain during travel.



OCCUPATIONAL THERAPY

Department Overview:

The Occupational Therapy (OT) Department supports clients in achieving functional independence in daily living, learning, and working through purposeful activities and targeted interventions. Key focus areas include upper limb management; hand function and fine motor skills such as pre-writing, writing, and typing; positioning and mobility training for wheelchair and power chair users; sensory processing for daily tasks, classroom learning, and play; visual perception and cognition; and activities of daily living and life skills training. The OT department also manages the Seating and Posture Clinic, Hand Clinic and Splinting, Sensory Processing and Sensory Integration Clinic.

Statistics:

- 23 new seating systems provided; 33 seating modifications completed.
- 596 equipment repairs carried out (special seating, wheelchairs, power chairs, buggies).
- 90% of repairs were for school clients; 10% for DAC, GROW, OP, and HMP clients.

Client Feature: Arthur Dominic

Arthur Dominic, a 5-year-old EIPIIC client with Global Developmental Delay, presented with poor posture and excessive writing pressure due to reduced body awareness and pencil control. Occupational therapy interventions, including the use of a compression vest and fine motor training with adaptive pencil grips, led to improved posture, pressure control, and a mature grasp. He now demonstrates greater independence, confidence, and active participation in group writing activities.



Department Highlights:

Occupational Therapy Day 2025: Growing Through Gardening

In celebration of Occupational Therapy Day 2025, the department organised a gardening activity themed "Cultivating Our Legacy, Branching Out for the Future." Clients and staff collaborated to create personalised planters using adaptive tools that enabled participation by individuals of all abilities. Activities included sensory digging, seeding, watering, and pruning. The event was a meaningful and engaging demonstration of the therapeutic benefits of occupational therapy.



PHYSIOTHERAPY

Department Overview:

The Physiotherapy Department provides comprehensive assessments and customised interventions to improve clients' gross motor function. Treatment approaches include manual therapy, core strengthening, balance training, gait correction, endurance training using medical treadmills and the Alter-G anti-gravity treadmill, as well as hydrotherapy. The team also manages post-surgical and post-Botox rehabilitation and prescribes mobility devices and orthoses to enhance functional independence and community participation. The PT department also manages the Orthopaedic Clinic, Paediatric Psychological Testing Services, and Paediatric Neurology Clinic.

Client Feature: Toh Sze Ning

Born with cerebral palsy, Sze Ning has been receiving comprehensive physiotherapy support from CPAS for many years. This ongoing care has been instrumental in helping her live a fulfilled life and reach remarkable achievements in Boccia, where she now represents Singapore on the international stage.

As an athlete under the Singapore Disability Sports Council, Sze Ning earned recognition as a SPEX Scholarship recipient in 2025. Her competitive success has been equally impressive—in December 2024, she and her partner Gareth Ho claimed a silver medal in the BC3 Pairs event in Bahrain. Building on this momentum, Sze Ning continued her winning streak in 2025 by securing a bronze medal at the Astana World Boccia Challenger in Kazakhstan.

Through dedicated physiotherapy support and her own determination, Sze Ning exemplifies how comprehensive care can help individuals with disabilities achieve their full potential both in daily life and elite competition.



Statistics:

Gross Motor Function Improvement after Physiotherapy Intervention:

- **EIPIC** : 85% of clients showed measurable improvement
- **CPAS School** : 77% improvement
- **GROW** : 81.8% improvement
- **DAC** : 84% improvement

Department Highlights:

Upskilling for Better Care: Physiotherapy Training Across CPAS Programmes

In 2024, the Physiotherapy team led training initiatives across EIPIC, School, DAC, and Home-Based Programmes, equipping educators, caregivers, and support staff with practical skills to better support clients' physical needs.

Topics covered included basic exercises, cerebral palsy awareness, mat handling techniques, and the benefits of structured physical activity. For DAC staff and caregivers, hands-on sessions on Range of Motion and Back Care Basics received strong feedback ratings of 93.3% and 98% respectively.

Six caregiver education sessions—focusing on postural care, post-surgical and post-Botox management—were delivered in both physical and virtual formats. Additionally, caregivers of OP and HMP clients participated in exercise training (15 families in total), while volunteers attended a dedicated session on safe transfers and lifting techniques.



PSYCHOLOGY

Department Overview:

Our psychologists specialise in providing services which address pediatric needs. We provide services for a range of behavioural, developmental and learning needs. As mental health professionals, psychologists play an integral role in supporting the functional development of individuals with learning and developmental difficulties. They assess the psychosocial, emotional and cognitive abilities of individuals with special needs to facilitate their learning. Psychologists consult with medical professionals and collaborate with allied health professionals, interventionists, support staff, parents and families, in supporting the holistic development of individuals with special needs.

Client Feature: “H”

CPAS Psychologist Chris has been supporting client 'H' since August 2024 for emotional outbursts—screaming and shouting at teachers and peers, occurring twice weekly and disrupting learning. Weekly sessions explored H's triggers using reactive and proactive approaches. Reactively, H expressed his experiences through art in a safe space, gaining self-awareness of inappropriate behaviors. Proactively, H learned to identify physiological triggers and apply regulation strategies before escalation. Intervention frequency decreased from weekly to monthly as H demonstrated improved self-regulation skills. Teachers and caregivers now report significantly fewer tantrum episodes, with H successfully detecting and de-escalating his own triggers at home and school.

Statistics:

- 100% of students in EIPIC were supported for their transition to other SPED / MOE schools.
- 100% of students in SPED were supported for their Deputyship applications.



Department Highlights:

World Mental Health Day 2025

The Psychology department organised Psychology Day in alignment with World Mental Health Day on 11th October 2024. For the entire month, the Psychology team sent posters sharing ways to enhance one's mental health at the workplace. Reminder pocket cards were provided to each of the staff.



SOCIAL WORK

Department Overview:

CPAS Social Work department support clients and their families in managing challenges related to disabilities and help clients realise their fullest potential. They provide a range of services including information and referrals, casework and counselling, financial assistance, and linking clients to community resources. Additionally, they offer support for parents and caregivers and facilitate agency visits to assist with transition planning.

Client Feature: Nelson Foo Shu Xiang and Family

CPAS Social Work services have been instrumental in supporting Nelson Foo Shu Xiang and his family. With the Social Worker's assistance, Nelson's parents secured financial aid from the AIC Home Care Giving Grant and Careshield Life schemes, providing ongoing relief. Transport challenges were eased through enrolment in the AIC Medical Transport scheme, reducing family strain. Additionally, Nelson was referred to SG Enable's Take a Break service, offering in-home caregiving support and respite for his mother. Nelson's family expressed deep gratitude for the comprehensive, community-based support that has significantly improved their quality of life.

Statistics:

- Engaged 1,176 caregivers and clients through social work events and activities in 2024



Department Highlights:

A Day of Care and Connection: Respite Care Day 2024

On 19 October 2024, the CPAS Social Work Department hosted a Respite Care Day dedicated to caregivers' relaxation, connection, and self-care. In collaboration with Touch Community Services, married couples participated in meaningful activities such as appreciation exercises, hand massages, love letter writing, and vow renewals, receiving positive feedback. Meanwhile, other caregivers enjoyed personal colour analysis, decoupage art, and a microgreens workshop. Sponsored transport

was provided to 45 clients and families, ensuring accessibility. A total of 132 clients and family members attended, with caregivers expressing high satisfaction.



SPEECH AND LANGUAGE PATHOLOGY

Department Overview:

Our Speech and Language Pathology (SLP) team specialises in assessing and managing speech, language, communication, literacy, feeding, and swallowing skills to support children and adults with cerebral palsy and multiple disabilities.

We also provide Augmentative and Alternative Communication (AAC) interventions using low- and high-tech devices for clients with complex communication needs and reduced speech intelligibility. The SLP department also manages the Audiology Clinic, and Feeding and Swallowing Clinic.

Client Feature: 'J'

'J', a 7-year-old with West Syndrome enrolled in EIPIIC since 2023, has limited neck and trunk control resulting in poor posture and balance. Feeding was challenging due to inadequate seating. After consultation with the Transdisciplinary team, a tumble form seat was loaned for home use, providing J with postural support, safe and comfortable seating, and improved feeding posture that reduces aspiration risk. This intervention has facilitated safer feeding and greater engagement in daily activities.

Department Highlights:

Speech Therapy Week Outreach: Celebrating Differences

The Speech and Language Pathology Department organised an outreach event to commemorate Speech Therapy Week 2024, themed Celebrating Differences. Held at One Punggol Celebration Square 2 on 9 November 2024, the event attracted approximately 1,109 visitors. Informational booths covered key areas including speech, language, feeding, and assistive technology, alongside CPAS programmes and services.

Statistics:

- Approximately 312 clients received oromotor and feeding tools.
- Around 740 feeding and oromotor devices were distributed for classroom and home use.
- About 120 AAC devices were loaned, benefitting over 70 clients across settings.



SLP Staff and volunteers facilitated interactive activities, games, and discussions designed to raise awareness of the vital role Speech Therapists play in supporting communication and feeding needs across various settings.

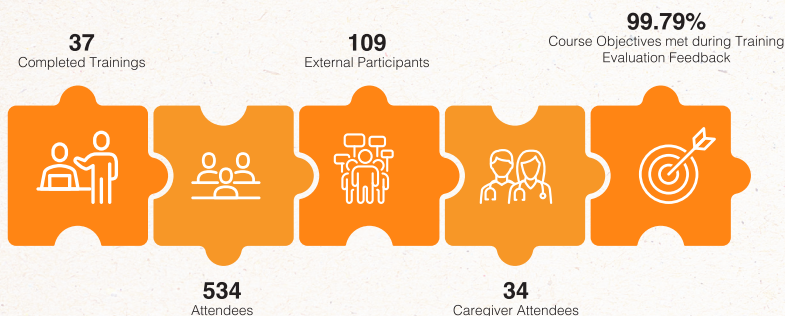


LEARNING, DEVELOPMENT AND CONSULTANCY (LDC)

Department Overview:

Learning, Development and Consultancy (LDC) is the training arm of Cerebral Palsy Alliance Singapore (CPAS). We aim to build the capabilities of our learners so that they can deliver the best programmes and services for their clients. For caregivers, we strive to empower them with the skills and knowledge to care confidently. We support this belief by providing certification courses and workshops conducted by experts for professionals in fields such as Early Intervention, Special Education, Allied Health, as well as caregivers of individuals with disabilities.

Statistics:



Department Highlights:

Completed Training Courses:

Department Overview	Trainer
Certificate in Ayres Sensory Integration Module 1 - 3	Stephan Chan
NDTA™ Certificate Course in the Contemporary Practice of NDT for the Management of Children with Cerebral Palsy and other Neuromuscular Disorders	Suzanne Davis Bombria Bonnie Boenig Monica Wojcik Ligia Cristina Jaramillo
Foundation Skills in Handling Children with Food Refusal Issues	Ashwhinie Siva Anantham Yvette Lam Jaya Gopinath
Foundational Skills for Facilitating Eating, Drinking, and Swallowing Skills in Children	Jie Ean Loh Low Hui Jia Jessica Melanie Ding Si Ying
Fundamental Principles of Seating and Positioning	Andrea Claudia Koh Ser Wei Pampi Ghosh
Facilitating the Development of Upper Extremities in Pediatric Therapy	Kim Barthel
Toy Adaptation for Switch Access	Ramlan Bin Hamim
Feeding - A Sensory Motor Approach	Lori Overland
Toilet Training for Children with Special Needs	Syazwani Binte Sahrol Sharifah Shahidah Binte Syed Omar Aljuffri Ruzanna Binte Jamil
Understanding Behaviours for the Inclusive Classroom	Ruzanna Binte Jamil & Nurkhairiyati Binte Suhairi

Courses with Recurring Runs (since 2021):

Course	Runs
Basic First Aid with CPR+AED	9
Oral Placement Therapy for Speech Clarity and Feeding	3
Handling Children with Eating, Drinking, and Swallowing Issues	2
Foundation Skills in Handling Children with Food Refusal Issues	4
Promoting Emergent Literacy skills	2
Toilet Training for Children with Special Needs	4
Facilitating Language Communication Skills in Children with Developmental Delays	4
Assistive Technology for Cerebral Palsy	4
Strategies in Training Persons with Physical Disabilities to perform basic ADL - Feeding, Dressing and Grooming	3
Social Story™ Intervention Writing Social Stories	2
Sensory Processing and Sensory Integration Dysfunction Commonly Found in Children with Special Needs	3
Toy Adaptation for Switch Access	2

LDC has been recognised as an Allied Health Professional Council (AHPC) approved Continuing Professional Education (CPE) provider. Allied Health Professionals (AHPs) can accumulate CPE hours when attending LDC courses approved by AHPC.

LDC's caregivers' courses are now Skillsfuture credit (SFC) claimable. Caregivers can use SFC to offset the course fee after the Caregivers Training Grant (CTG) for eligible courses.

EVENTS



Superstar 2024 Charity Golf and Dinner

In March 2024, CPAS held the Superstar 2024 Charity Golf and Dinner, a fundraising event graciously led and organised by our dedicated supporter, Ms Amberly Woo. The day commenced with an engaging round of golf, providing attendees the opportunity to enjoy both the sport and meaningful conversations. The event concluded with an evening of fine dining, entertainment, and camaraderie. Thanks to the generosity of all participants, sponsors, and supporters, the event successfully raised over \$200,000. We extend our sincere appreciation to Ms Amberly Woo and everyone involved in helping us achieve this remarkable milestone.



CPAS Charity Dinner 2024

The CPAS Charity Dinner 2024 was held on 2 August at the Sands Expo and Convention Centre and proved to be a resounding success. With the generous support of our sponsors, guests, staff, and clients, we raised more than \$280,000. We are especially honoured to have welcomed our Guest of Honour, Mr Teo Chee Hean, then Senior Minister and Coordinating Minister for National Security, whose presence greatly enriched the occasion. We also wish to express our heartfelt gratitude to our venue sponsor, Marina Bay Sands, for their invaluable support as part of the Sands for Singapore 10th Charity Festival.



World Cerebral Palsy Day 2024

On 5 October 2024, CPAS commemorated World Cerebral Palsy Day with the 'Celebrating Possibilities' carnival. This event not only honoured the achievements and lives of individuals with cerebral palsy but also marked the 40th anniversary of our iconic Suzy Doll Donation Box, a long-standing symbol of fundraising and awareness in Singapore. The day was filled with inspiration and joy, featuring moving testimonials from poet Stephanie Esther Fam, who has cerebral palsy, and CPAS client and Paralympic medalist Jeralyn Tan.

Attendees enjoyed a variety of carnival games, live performances, finger food, and other activities that brought the community together in celebration. We are deeply grateful to the volunteers from Micron Singapore, Singapore Pools, and By Nancy.sg for their invaluable support in making the event a success.

THE YEAR AHEAD



CPAS 5 Year Strategic Plan

CPAS is committed to playing a key role in the success of the Enabling Master Plan 2030 (EMP2030), focusing on improving the lives of persons with Cerebral Palsy and Multiple Disabilities.

Starting in 2024, CPAS embarked on a 5-year strategic plan with an emphasis on growing programmes and services aligned with the EMP2030, increase employability of Persons with Disabilities (PWDs), and sharing of knowledge with caregivers, service providers and the wider community. To achieve this, CPAS will also look at both capacity and capability building to serve more clients.

(a) Exploring Growth Opportunities

CPAS aims to scale our number of clients by 10% on a year-on-year basis, reaching 1,000 clients at the end of the 5 years. Our client numbers grew from 798 last financial year, to 857 this financial year. We will implement a consistent review of our programmes and service offerings to ensure we continue to provide targeted and relevant services, especially for our core service users.

With an ageing client profile, CPAS embarked on a feasibility study on the potential establishment of a programme targeting post-55 seniors with Cerebral Palsy and multiple disabilities. CPAS will continue our efforts in this area, looking into funding, identification of potential premises and service model design.

(b) Improving Quality of Service

Above and beyond, CPAS remains committed to delivering high quality services for our service users, through maintaining our high client satisfaction rate at between 80% to 100%. CPAS strives to maintain or improve our Organisation Health Index (OHI) score, assessed through the Organisation Health Framework for Social Services (OHFSS) in the "Good" banding or better, through addressing our weaker sub-domain on user centric services of knowledge and research.

(c) Enhancing our capabilities through two Centres-of-Excellence (CoE)

#1: CoE (Assistive Technology)

CPAS aspires to become the sector leader in Assistive Technology (AT). This is achieved through targeted efforts to raise the sector's capabilities and awareness of AT, with the core objective to help ensure access to AT for PWDs, allowing them to lead independent lives across all stages of their lives.

In the past financial year, the CPAS Assistive Technology Hub initiated an innovation wing to build a culture of innovation to resolve functional challenges faced by our students and clients. Through this wing, some innovative solutions developed including a two-switch mounting tray and switch-adapted watering bottles amongst others.

In the upcoming financial year, CPAS will continue to develop more innovative solutions through this wing and will leverage on collaborations and partnerships with external agencies such as corporates and institutes of higher learning to advance the adoption of AT.

#2: CoE (Trans-Disciplinary Approach)

CPAS also aspires to become the sector leader in the Transdisciplinary (Trans-D) approach. The Trans-D approach is a family-centred approach to enhancing holistic and comprehensive development in clients by adopting a common view on educational needs and a consensual commitment to integrated planning and implementation.

To do so, CPAS will focus on building staff capabilities in the Trans-D model of service delivery. In the last financial year, representatives from the various CPAS programmes, participated in a learning journey to special schools in Hong Kong. The visit aimed to evaluate the implementation of the Trans-D approach at CPAS and SAHK, explore strategies for collaboration with families, and understand challenges faced in facilitating skill transfer at home. Insights from this trip will inform best practices and enhance the integration of Trans-D processes across CPAS services.

Building on this, in the next financial year, the team plans to commence the pilot intervention cycle for identified classes across the different programmes, following a rubric to gradually build staff competencies in implementing enhanced Trans-D initiatives. This will be followed up with additional efforts in knowledge transfer, such as engaging caregivers to embed learning opportunities in home routines.

FUNDRAISING PLANS

In addition to support from the government, CPAS relies on the generous support from corporate, organisations and individual donors and benefactors. Funds raised will go towards sustaining and extending our core programmes and services to children and adults with Cerebral Palsy or multiple disabilities.

The Tote Board has announced the extension of the Enhanced Fund-Raising Programme (EFR), which provides dollar matching for donations received from approved campaigns and projects, subject to eligibility conditions.

CPAS plans to roll out 4 fundraising projects and campaigns this financial year.

Quarter 1: Empower Children and Adults with Cerebral Palsy or Multiple Disabilities (CPAS25)

This is a year-long digital fundraising campaign launched at the start of each Financial Year to rally for donations to support all programmes and services. Through appeals, we hope to solicit donations, all year round, for over 800 children and adults with Cerebral Palsy or multiple disabilities under our care.

Quarter 2: CPAS Charity Dinner 2025 – Rock N Roll for a Cause

CPAS will work with our longstanding venue sponsor, Marina Bay Sands (MBS), to organise our annual Charity Dinner with an expected turnout of over 400 guests.

This year's theme is Rock N Roll for a Cause, and CPAS aims to raise an event target of \$250,000. This would be done through table sponsorships, outright donations, and on-event day segments such as Raffle Draw and Auction segments.

Quarter 3: Spare Your Change for Suzy 2025 – SG60 Edition (SYC25)

World Cerebral Palsy (CP) Day is commemorated in October each year. As the specialist social service agency in Singapore working with persons with the condition, CPAS dedicates the entire month of October as World CP Month.

Through a mix of volunteering, advocacy and fundraising collaborations with individuals, corporates and community partners, CPAS hopes to raise awareness of CP in Singapore.

Suzy, the iconic donation box from CPAS, represents a girl with CP. She fronts the campaign and will appeal to donors to "Spare Their Change" through simple everyday giving.

As part of the nation's SG60 push, we are looking to place Suzy at 60 locations island wide. This can be in the form of physical donation box placements, digital screens, event posters, online appeals, or projects to raise funds throughout the campaign period.

Quarter 3/4: Gift of Hope (GOH26)

The end of year and the start of the year are usually marked with festivities such as Christmas and the Chinese New Year. Donors tend to give gifts during this period, and CPAS plans to launch this campaign to invite donors to share a gift of hope for our beneficiaries in our care.



SUMMARISED FINANCIAL STATEMENTS

Cerebral Palsy Alliance Singapore

Statement of Financial Position

For year ended 31st March 2025

	FY24/25	FY23/24
	S\$	S\$
Assets		
Non-Current Assets	14,514,900	12,585,204
Current Assets	20,996,965	21,129,920
	35,511,865	33,715,124
Liabilities and Funds		
Current Liabilities	3,568,685	3,402,385
Deferred Capital Donation & Lease Liabilities	12,379,008	10,656,783
Funds	19,564,172	19,655,956
	35,511,865	33,715,124

Statement of Comprehensive Income

For year ended 31st March 2025

	Total	Total
	S\$	S\$
Income		
Government Grants	9,795,564	8,793,818
Specific Donations	1,171,372	89,130
General Donations	908,865	812,724
Programmes/Therapy Treatment Fees	652,888	595,868
Wage Credit Scheme	467,147	32,531
TOL Fee	1,520,476	1,345,277
Others	5,937,432	5,534,142
Total Income	20,453,744	17,203,490
Expenditure		
Manpower	13,209,058	11,761,434
General & Administrative Costs	1,825,265	1,697,751
Upkeep and Utilities	599,945	552,784
Utilisation of Specific Funds	1,001,058	1,166,744
Interest Expense & Depreciation (ROU Asset)	1,735,040	1,363,179
GST Expense	598,413	543,913
Others	1,576,747	1,200,077
Total Expenditure	20,545,526	18,285,882
Surplus/(Loss)	(91,782)	(1,082,392)

For our full annual report and financial statements for FY2024/2025, please visit our website at www.cpas.org.sg
 We sincerely thank all donors, volunteers, supporters, friends and well-wishers who have helped make a difference in the lives of our clients.

SUMMARISED FINANCIAL STATEMENTS

Cerebral Palsy Alliance Singapore School (East)

Statement of Financial Position

For year ended 31st March 2025

	FY24/25	FY23/24
	S\$	S\$
Assets		
Non-Current Assets	859,603	934,124
Current Assets	8,035,391	6,882,436
	8,894,994	7,816,560
Liabilities and Funds		
Current Liabilities	1,183,917	1,774,800
Deferred Capital Donation	380,319	372,049
Funds	7,330,758	5,669,711
	8,894,994	7,816,560

Statement of Comprehensive Income

For year ended 31st March 2025

	Total	Total
	S\$	S\$
Income		
Government Grants	12,763,446	10,266,546
Specific Donations	347,695	168,178
General Donations	574	16,962
Programmes Fees	133,574	227,909
Others	866,192	475,916
TOL Fee	679,968	675,841
Total Income	14,791,449	11,831,352
Expenditure		
Manpower	6,377,615	6,186,291
General & Administrative Costs	3,178,981	3,082,586
Upkeep and Utilities	332,286	298,098
Utilisation of Specific Funds	2,314,569	1,896,218
TOL Fee	679,968	675,841
Others	246,983	233,627
Total Expenditure	13,130,402	12,372,661
Surplus/(Loss)	1,661,047	(541,308)

For our full annual report and financial statements for FY2024/2025, please visit our website at www.cpas.org.sg

We sincerely thank all donors, volunteers, supporters, friends and well-wishers who have helped make a difference in the lives of our clients.

SUMMARISED FINANCIAL STATEMENTS

Cerebral Palsy Alliance Singapore School (West)

Statement of Financial Position

For year ended 31st March 2025

	FY24/25	FY23/24
	S\$	S\$
Assets		
Non-Current Assets	698,929	448,172
Current Assets	1,489,129	1,111,878
	2,188,058	1,560,050
Liabilities and Funds		
Current Liabilities	824,904	712,279
Deferred Capital Donation	392,162	222,115
Funds	970,992	625,656
	2,188,058	1,560,050

Statement of Comprehensive Income

For year ended 31st March 2025

	Total	Total
	S\$	S\$
Income		
Government Grants	4,570,163	2,725,576
Specific Donations	34,756	776,004
General Donations	-	1,000
Programmes Fees	118,677	33,972
Others	203,964	94,148
TOL Fee	680,400	510,300
Total Income	5,607,960	4,141,000
Expenditure		
Manpower	2,698,367	1,826,835
General & Administrative Costs	356,173	240,594
Upkeep and Utilities	306,127	206,824
Utilisation of Specific Funds	930,153	508,957
TOL Fee	680,400	510,300
Others	291,404	221,834
Total Expenditure	5,262,624	3,515,344
Surplus/(Loss)	345,336	625,656

For our full annual report and financial statements for FY2024/2025, please visit our website at www.cpas.org.sg

We sincerely thank all donors, volunteers, supporters, friends and well-wishers who have helped make a difference in the lives of our clients.



CEREBRAL PALSY ALLIANCE SINGAPORE

📍 65 Pasir Ris Drive 1,
Singapore 519529

☎ 6585 5600

✉ hqadmin@cpas.org.sg

🌐 www.cpas.org.sg